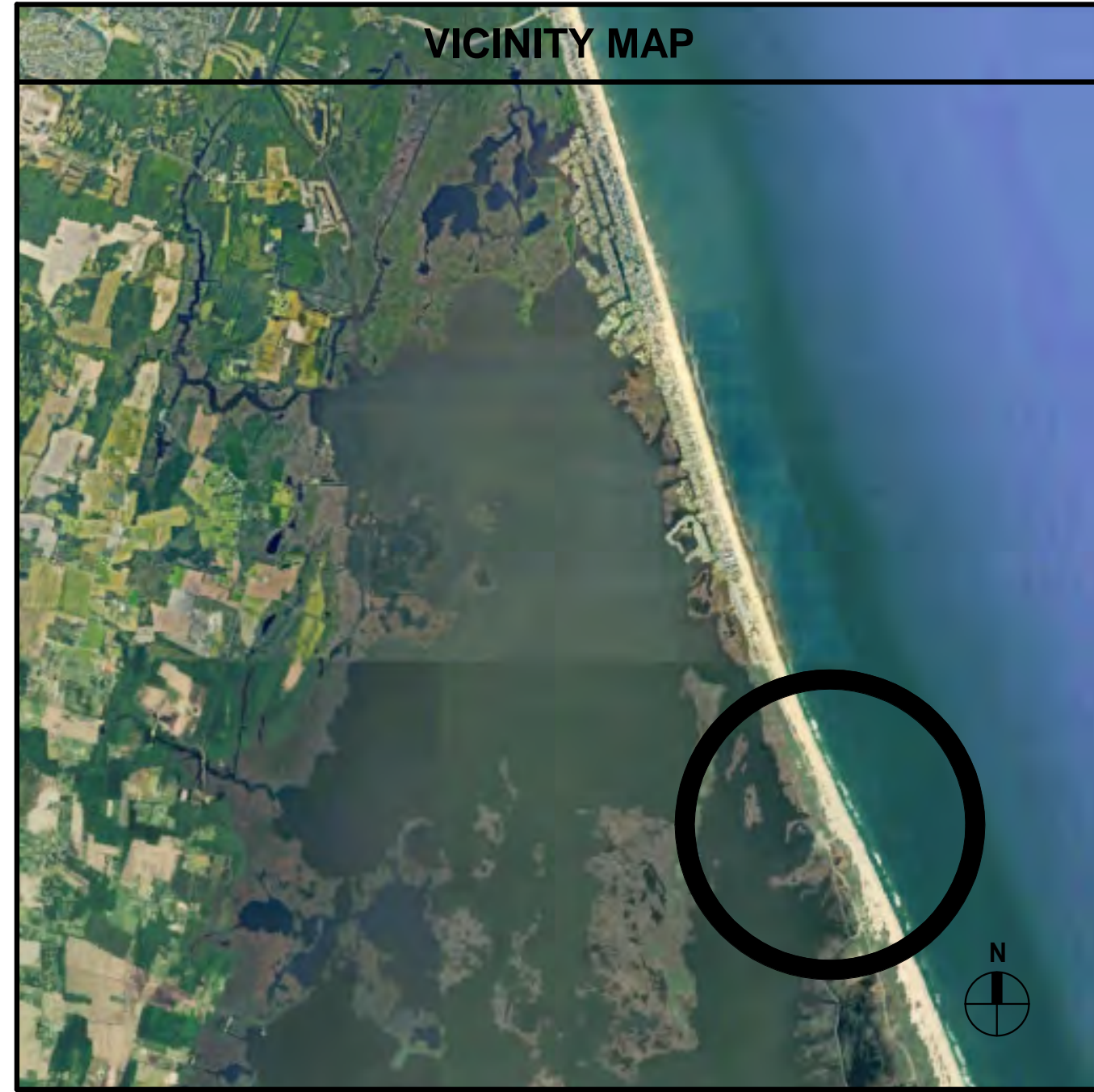
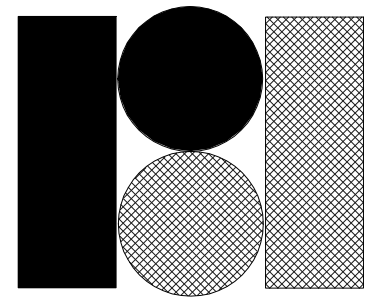


THESE DRAWINGS CAN NOT BE USED, COPIED, TRACED OR REPRODUCED, IN WHOLE OR PART OR MANNER WHATSOEVER WITHOUT PERMISSION FROM RBA ARCHITECTS

©



BBNWR OUTDOOR CLASSROOM



RBA ARCHITECTS

432 S. BATTLEFIELD BLVD., SUITE 101
 CHESAPEAKE VA, 23322
 PHONE: 757-546-2471
 FAX: 757-546-3812
 info@rbapc.com
 www.rbapc.com

SEAL:

BBNWR OUTDOOR CLASSROOM
 TITLE SHEET

REVISIONS		
NO.	DATE	DESCRIPTION

DATE: 8/16/24

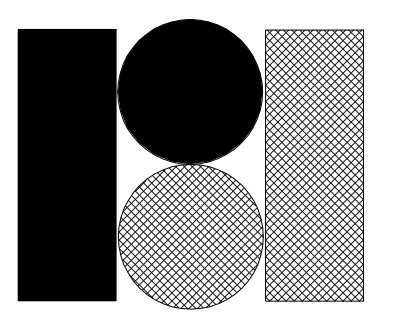
SHEET NUMBER:
T0.1

SHEET INDEX	
ARCHITECTURAL	
TO.1	TITLE SHEET
A1.1	FIRST FLOOR PLAN
A1.4	PLAN VIEWS
A2.1	ELEVATIONS
A2.2	ELEVATIONS
A5.1	DETAILS

EVERY ATTEMPT HAS BEEN MADE IN THE PREPARATION OF THESE DRAWINGS TO AVOID MISTAKES. THE DESIGNER, OR ANYONE FOR WHOM HE OR SHE IS RESPONSIBLE, ACCEPTS FULL RESPONSIBILITY FOR ANY ERRORS OR OMISSIONS IN THESE DRAWINGS.

THESE DRAWINGS CAN NOT BE USED, COPIED, TRACED OR REPRODUCED, IN WHOLE OR PART OR MANNER WHATSOEVER WITHOUT PERMISSION FROM RBA ARCHITECTS

EVERY ATTEMPT HAS BEEN MADE IN THE PREPARATION OF THESE DRAWINGS TO AVOID MISTAKES. THE DESIGNER, OR ANYONE FOR WHOM HE OR SHE IS RESPONSIBLE, ACCEPTS LIABILITY FOR ANY ERRORS OR OMISSIONS IN THESE DRAWINGS.



RBA ARCHITECTS
432 S. BATTLEFIELD BLVD., SUITE 101
CHESAPEAKE VA, 23322
PHONE 757-546-2471
FAX 757-546-3812
info@rbapc.com
www.rbapc.com

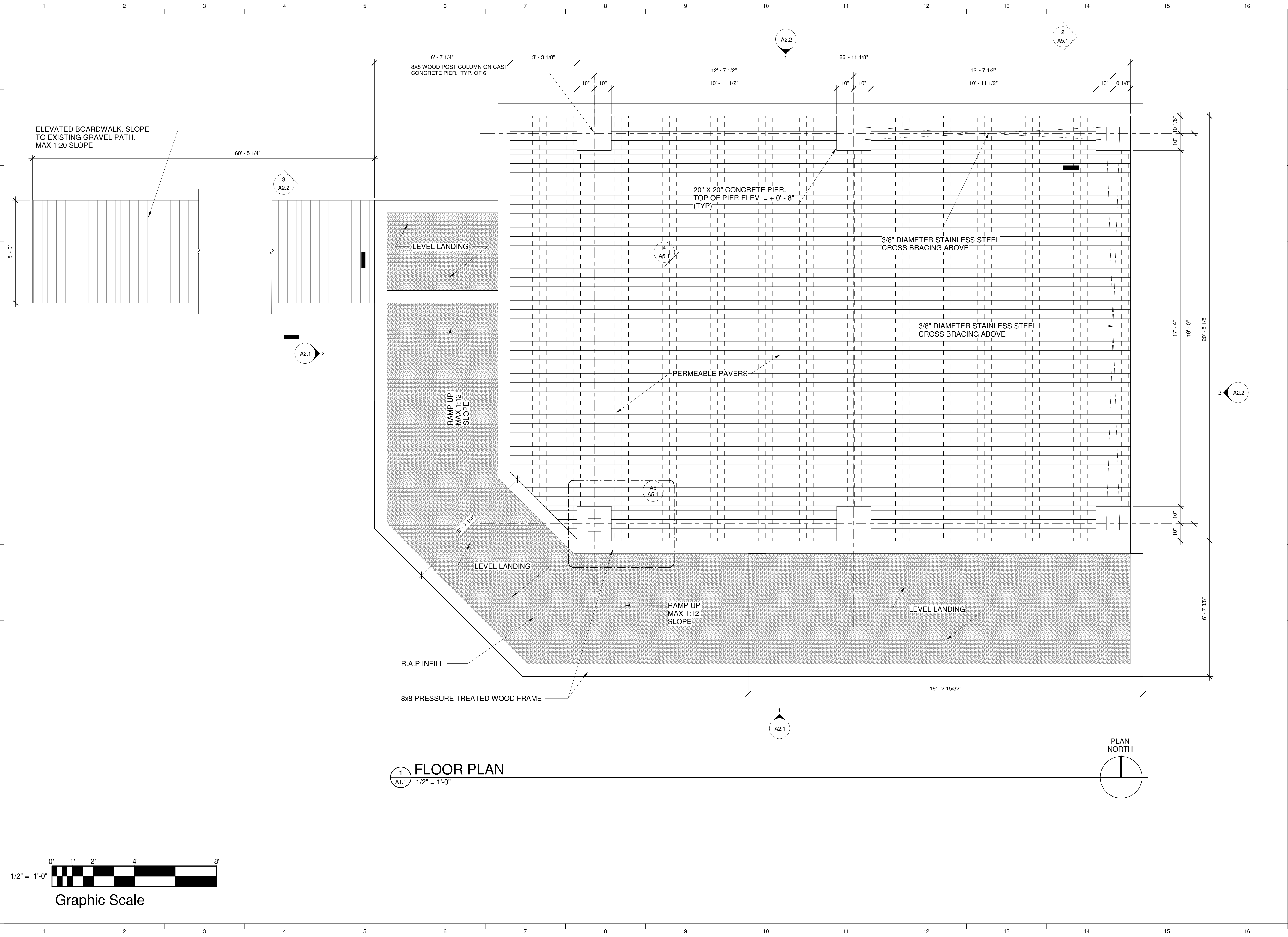
SEAL:

BBNWR OUTDOOR CLASSROOM
FIRST FLOOR PLAN

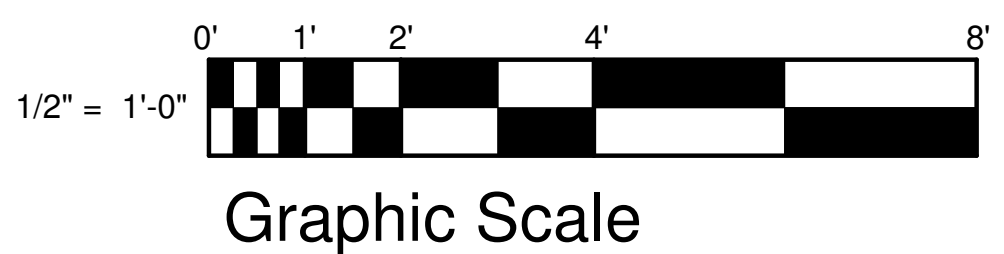
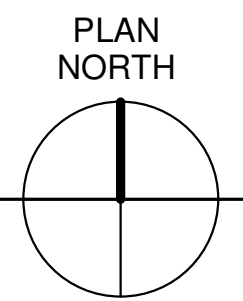
REVISIONS		
NO.	DATE	DESCRIPTION

DATE: 8/16/24

SHEET NUMBER:
A1.1



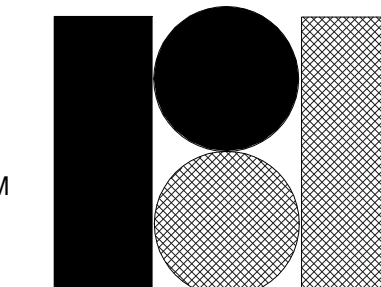
1 FLOOR PLAN
A1.1 1/2" = 1'-0"



Grid lines 1-16 and M-A are shown along the top and left edges of the drawing.

THESE DRAWINGS CAN NOT BE USED, COPIED, TRACED OR REPRODUCED, IN WHOLE OR PART OR MANNER WHATSOEVER WITHOUT PERMISSION FROM RBA ARCHITECTS

EVERY ATTEMPT HAS BEEN MADE IN THE PREPARATION OF THESE DRAWINGS TO AVOID MISTAKES. THE DESIGNER, OR ANYONE FOR WHOM HE OR SHE IS RESPONSIBLE, ACCEPTS FULL LIABILITY FOR ANY ERRORS OR OMISSIONS IN THESE DRAWINGS.



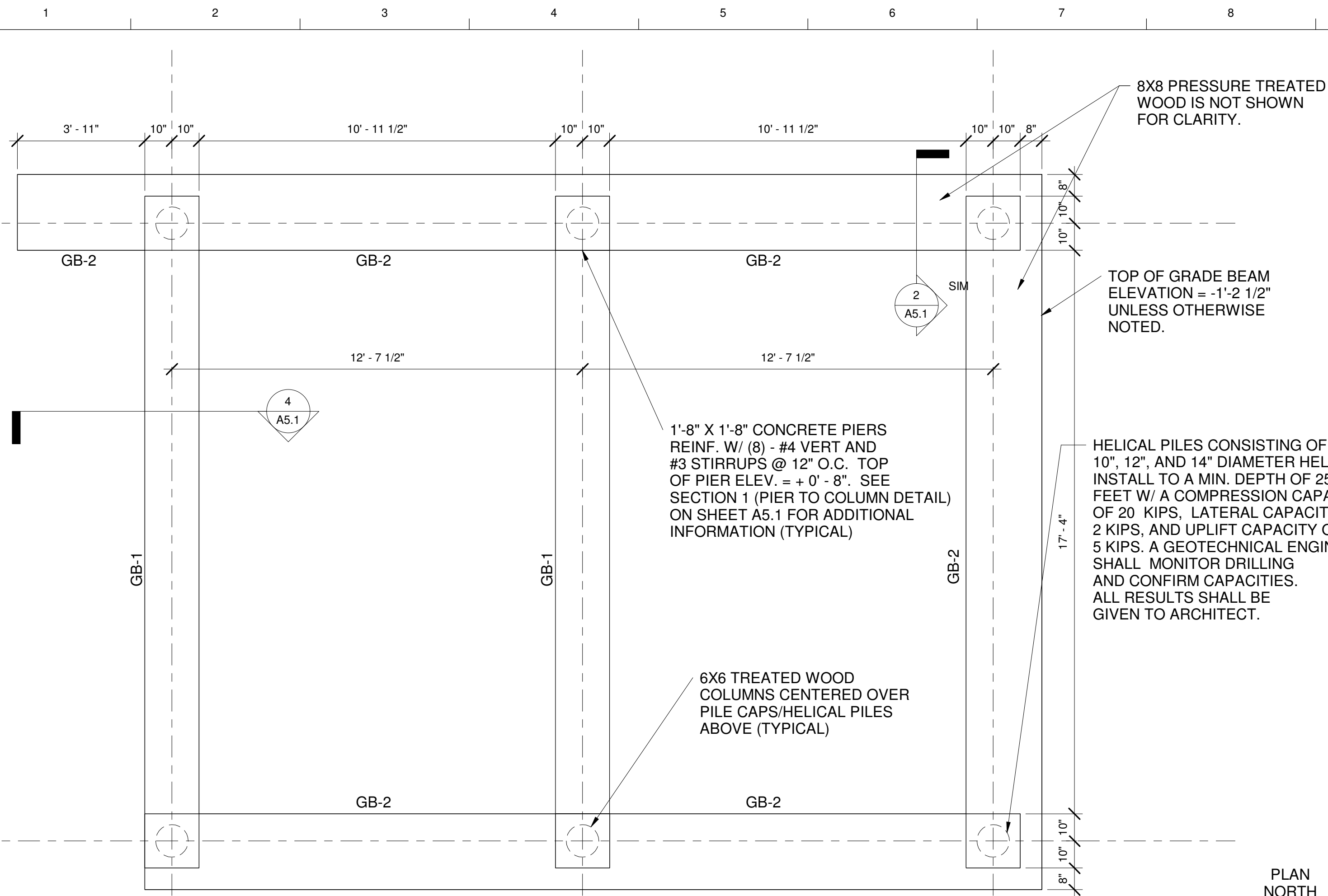
RBA ARCHITECTS

432 S. BATTLEFIELD BLVD., SUITE 101
 CHESAPEAKE VA, 23322
 PHONE 757-546-2471
 FAX 757-546-3812
 info@rbapc.com
 www.rbapc.com

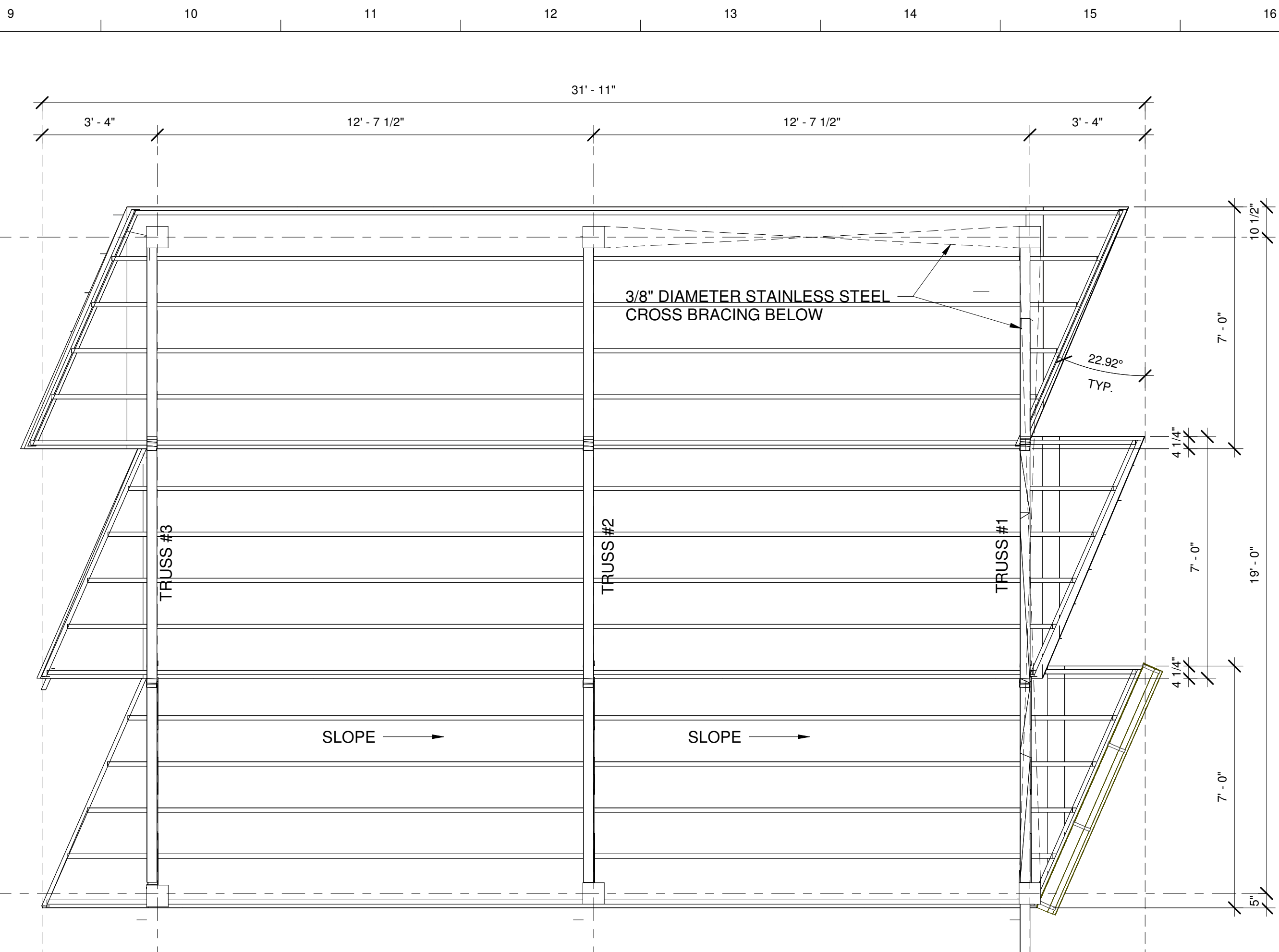
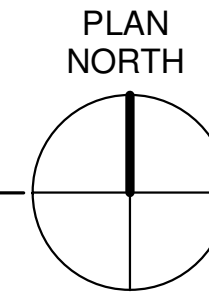
SEAL:

BBNWR OUTDOOR CLASSROOM

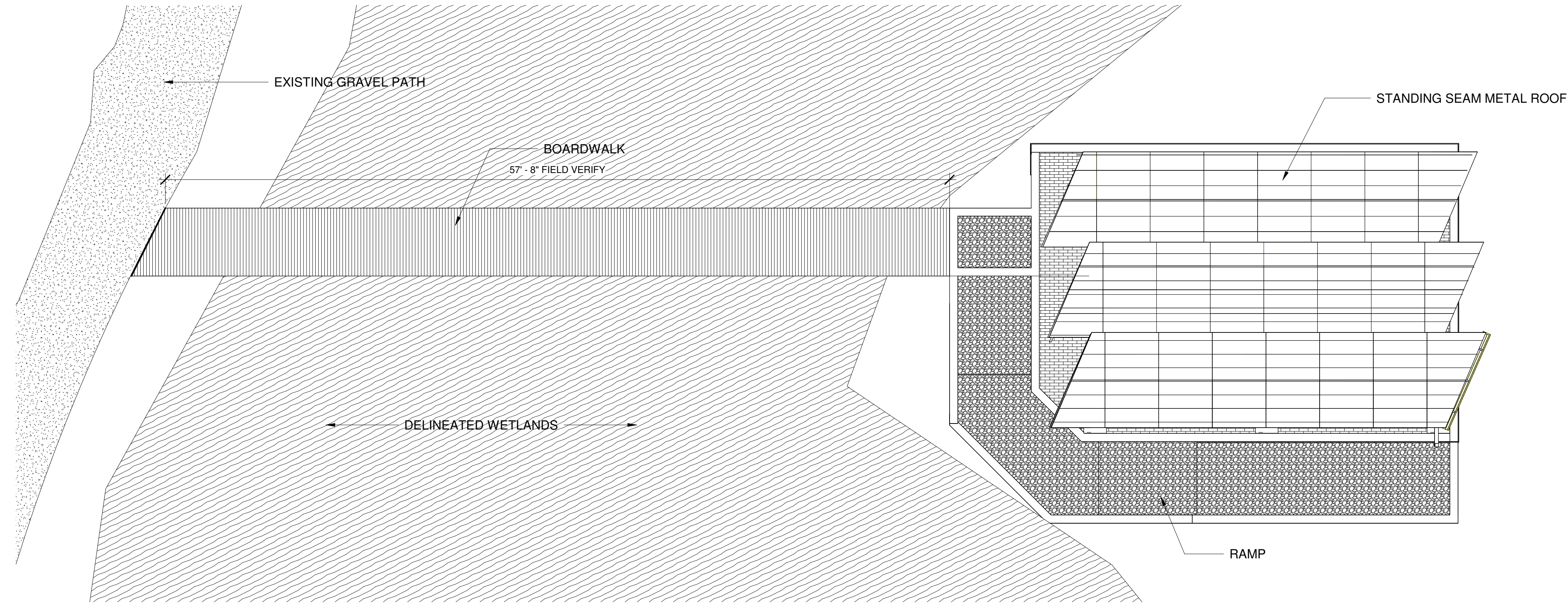
PLAN VIEWS



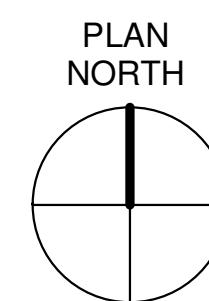
2 FOUNDATION PLAN
 3/8" = 1'-0"



5 REFLECTED CEILING PLAN
 3/8" = 1'-0"

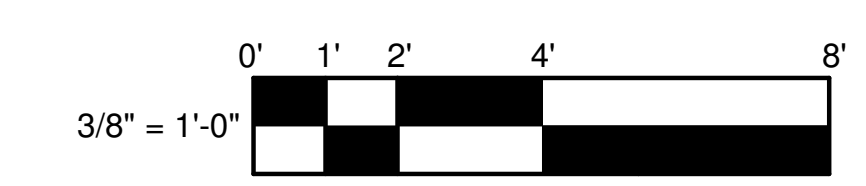
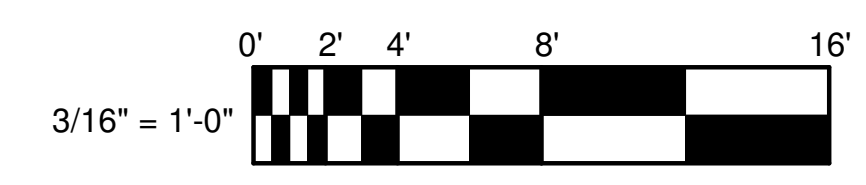


1 SITE PLAN
 3/16" = 1'-0"



MARK	SIZE			REINFORCING			REMARKS
	WIDTH	LENGTH	THICKNESS	TOP	BOTTOM	STIRRUPS	
GB-1	20"	CONT.	12"	(2) - #5	(2) - #5	(1) - #3@ 4", R@ 12" O/C	NOTE 1, 2
GB-2	28"	CONT.	12"	(3) - #5	(3) - #5	(1) - #3@ 4", R@ 12" O/C	NOTE 1, 2, 3

- NOTE 1: TOP OF GRADE BEAM ELEV. = -1'-2 1/2" UNLESS OTHERWISE NOTED.
- 2: GRADE BEAM SHALL BE CAST MONOLITHICALLY WITH PILE CAP AND PIER. SEE PIER TO COLUMN DETAIL ON SHEET A5.1 FOR ADDITIONAL INFORMATION.
- 3: PROVIDE 3/4" DIAMETER THREADED RODS @ 4'-0" MAX. FOR ATTACHMENT TO 8X8 PRESSURE TREATED WOOD BLOCKS. SEE SECTION @ HALF WALL AND GRADE BEAM ON SHEET A5.1 FOR ADDITIONAL INFORMATION.



REVISIONS		
NO.	DATE	DESCRIPTION

DATE: 8/16/24

SHEET NUMBER:

A1.4

THESE DRAWINGS CAN NOT BE USED, COPIED, TRACED OR REPRODUCED, IN WHOLE OR PART OR MANNER WHATSOEVER WITHOUT PERMISSION FROM RBA ARCHITECTS

EVERY ATTEMPT HAS BEEN MADE IN THE PREPARATION OF THESE DRAWINGS TO AVOID MISTAKES. THE DESIGNER, OR ANYONE FOR WHOM HE OR SHE IS RESPONSIBLE, ACCEPTS FULL LIABILITY FOR ANY ERRORS OR OMISSIONS IN THESE DRAWINGS.

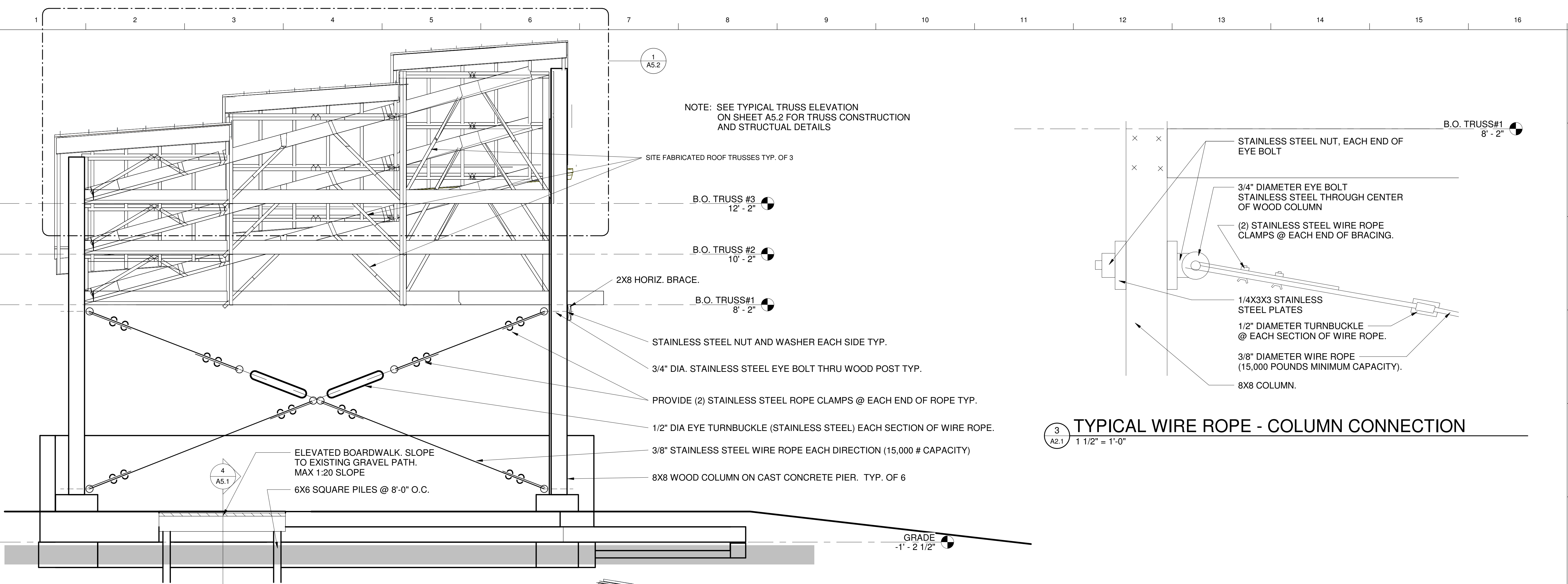
SEAL:

BBNWR OUTDOOR CLASSROOM
 ELEVATIONS

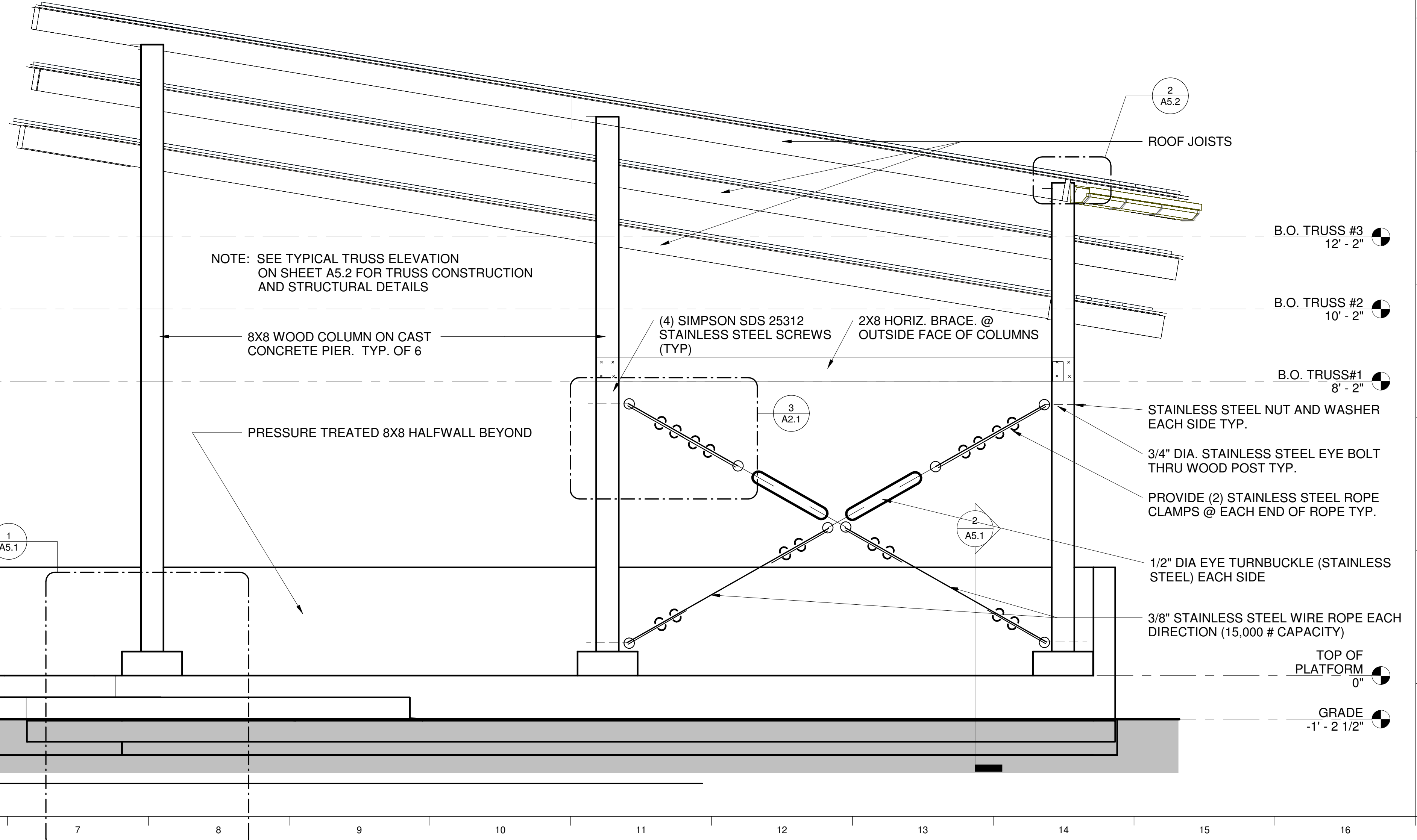
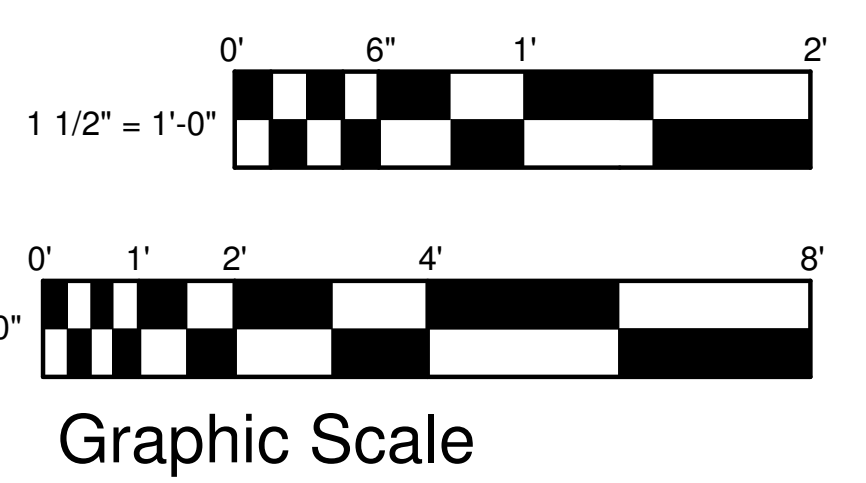
REVISIONS		
NO.	DATE	DESCRIPTION

DATE: 8/16/24

SHEET NUMBER:
A2.1

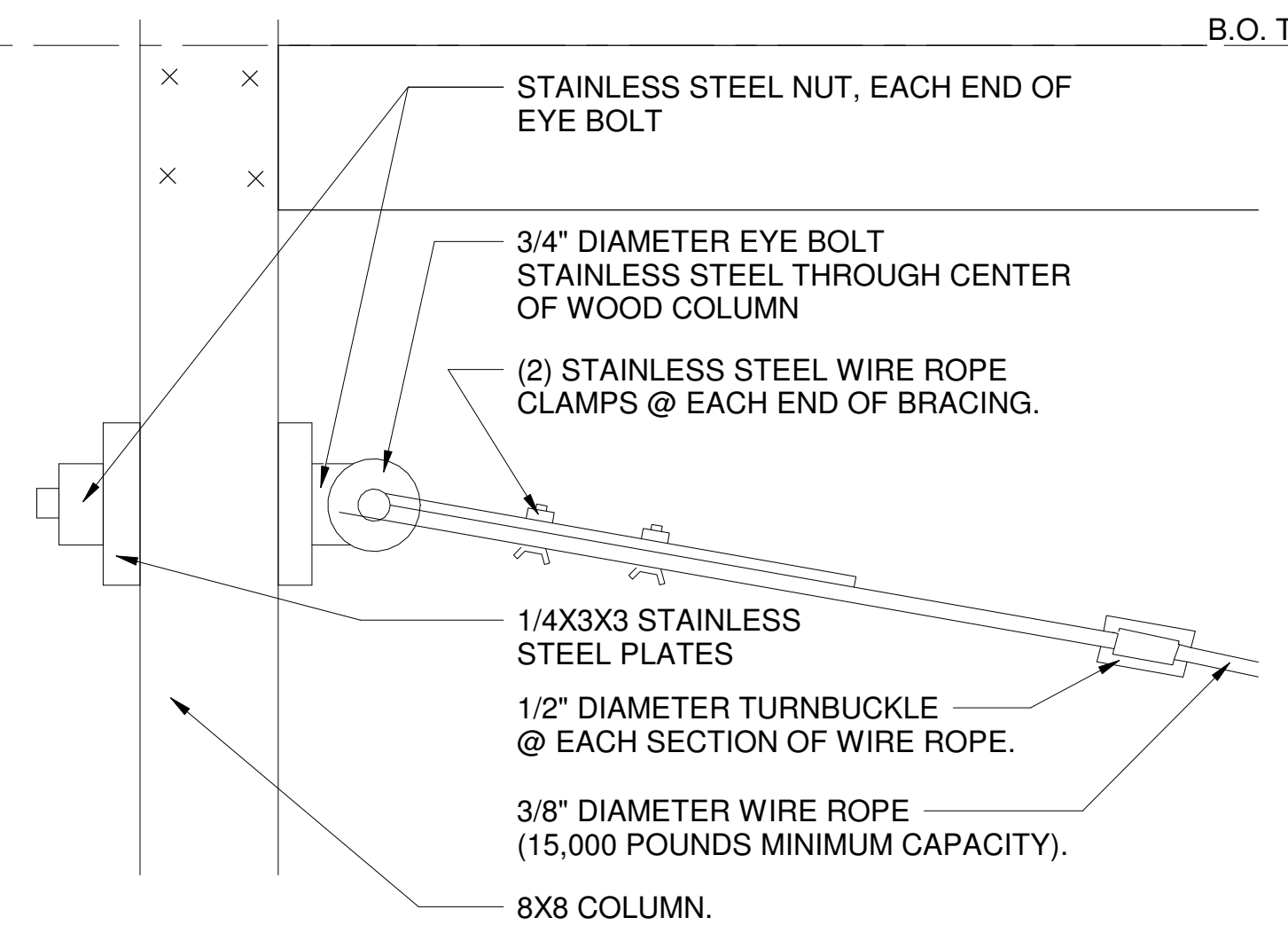


2 WEST ELEVATION
 1/2" = 1'-0"



1 SOUTH ELEVATION
 1/2" = 1'-0"

3 TYPICAL WIRE ROPE - COLUMN CONNECTION
 1 1/2" = 1'-0"

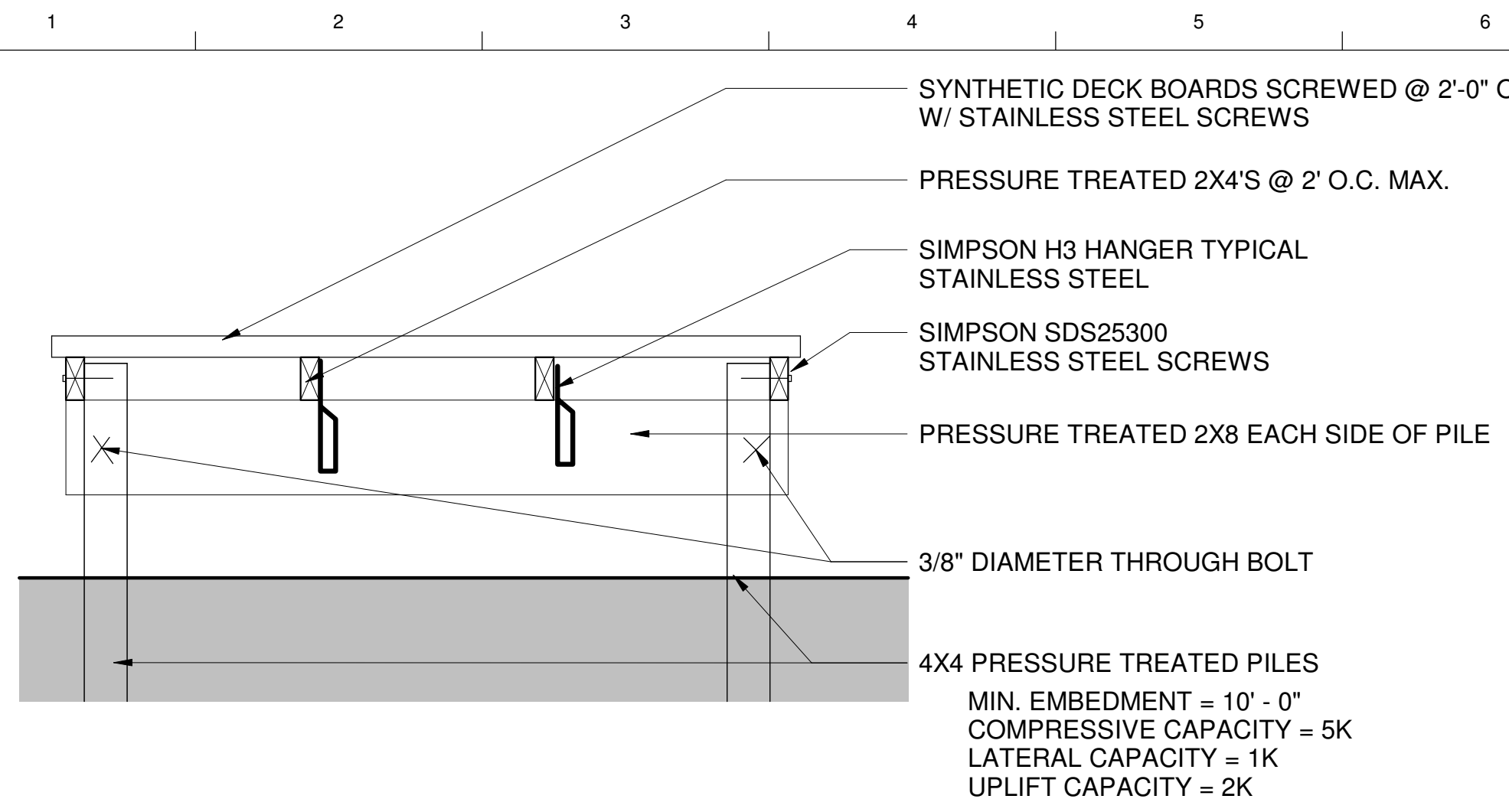


1 2 3 4 5 6 7 8 9 10 11 12 13 14 15 16

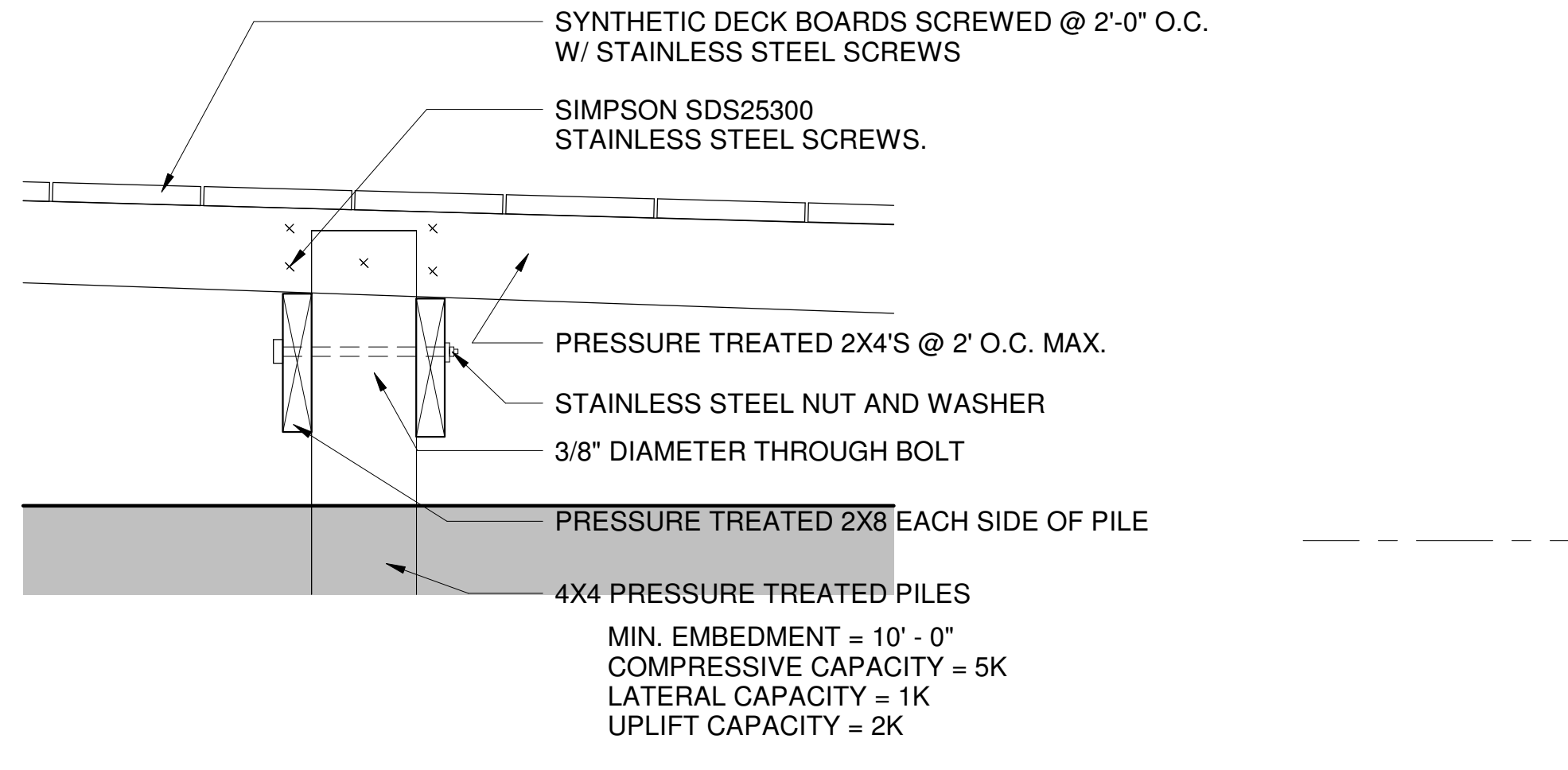
M
L
K
J
H
G
F
E
D
C
B
A

THESE DRAWINGS CAN NOT BE USED, COPIED, TRACED OR REPRODUCED, IN WHOLE OR PART OR MANNER WHATSOEVER WITHOUT PERMISSION FROM RBA ARCHITECTS

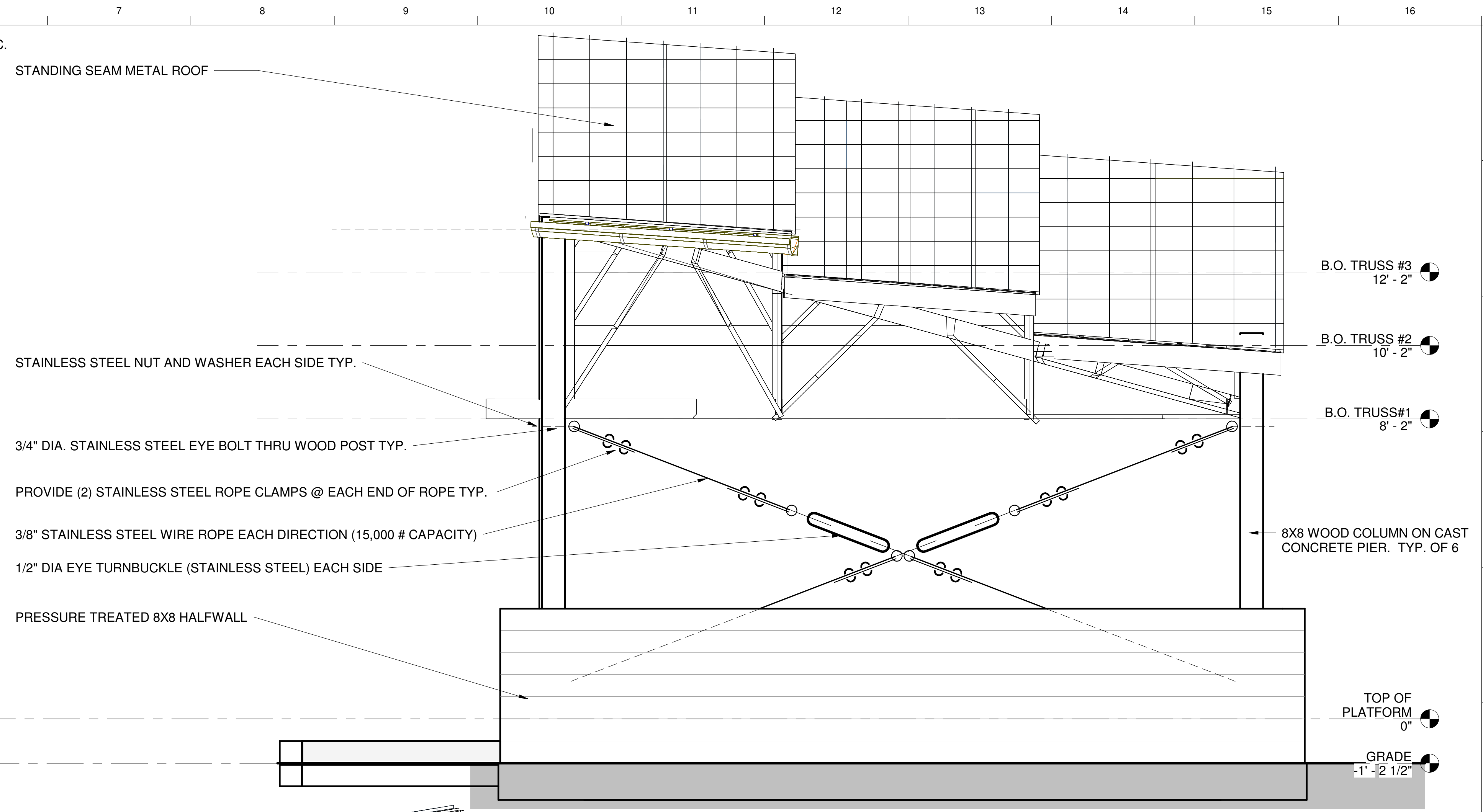
EVERY ATTEMPT HAS BEEN MADE IN THE PREPARATION OF THESE DRAWINGS TO AVOID MISTAKES. THE DESIGNER, OR ANYONE FOR WHOM HE OR SHE IS RESPONSIBLE, ACCEPTS LIABILITY FOR ANY ERRORS OR OMISSIONS IN THESE DRAWINGS.



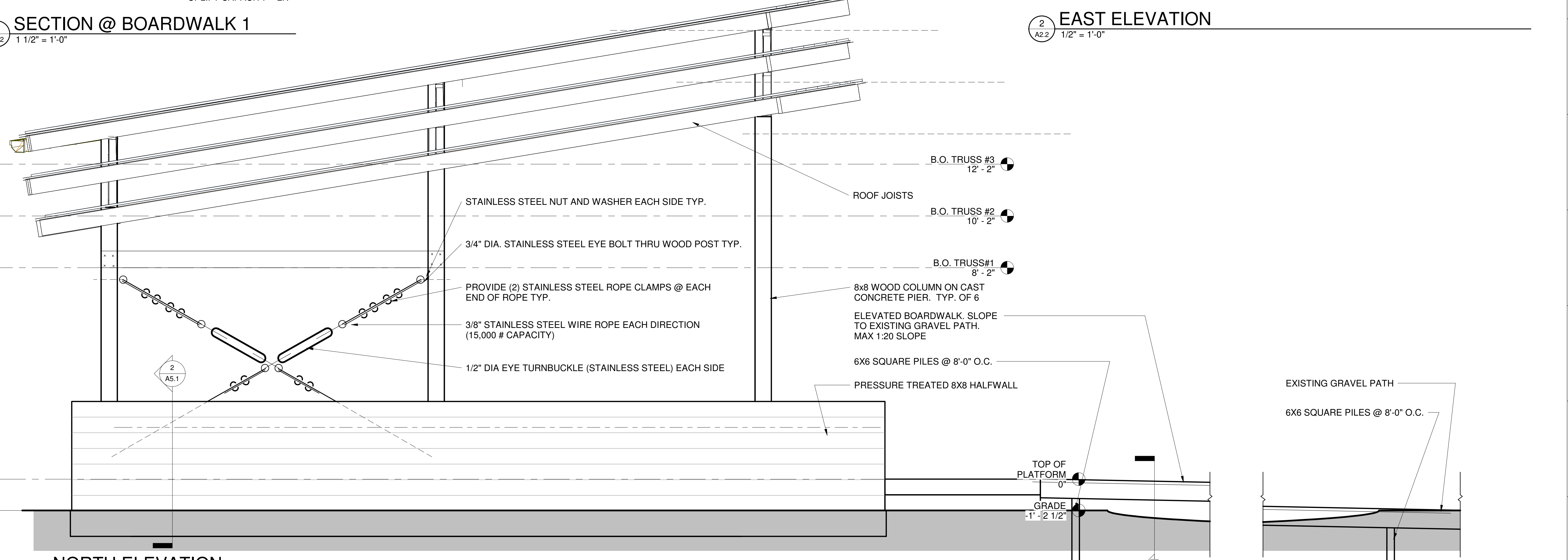
3 SECTION @ BOARDWALK 2
 A2.2 1" = 1'-0"



4 SECTION @ BOARDWALK 1
 A2.2 1 1/2" = 1'-0"



2 EAST ELEVATION
 A2.2 1/2" = 1'-0"



1 NORTH ELEVATION
 A2.2 1/2" = 1'-0"

SEAL:

BBNWR OUTDOOR CLASSROOM

ELEVATIONS

REVISIONS		
NO.	DATE	DESCRIPTION

DATE: 8/16/24

SHEET NUMBER:
A2.2

THESE DRAWINGS CAN NOT BE USED, COPIED, TRACED OR REPRODUCED, IN WHOLE OR PART OR MANNER WHAT SO EVER WITHOUT PERMISSION FROM RBA ARCHITECTS

EVERY ATTEMPT HAS BEEN MADE IN THE PREPARATION OF THESE DRAWINGS TO AVOID MISTAKES. THE DESIGNER, OR ANYONE FOR WHOM HE OR SHE IS RESPONSIBLE, ACCEPTS FULL RESPONSIBILITY FOR ANY ERRORS OR OMISSIONS IN THESE DRAWINGS.

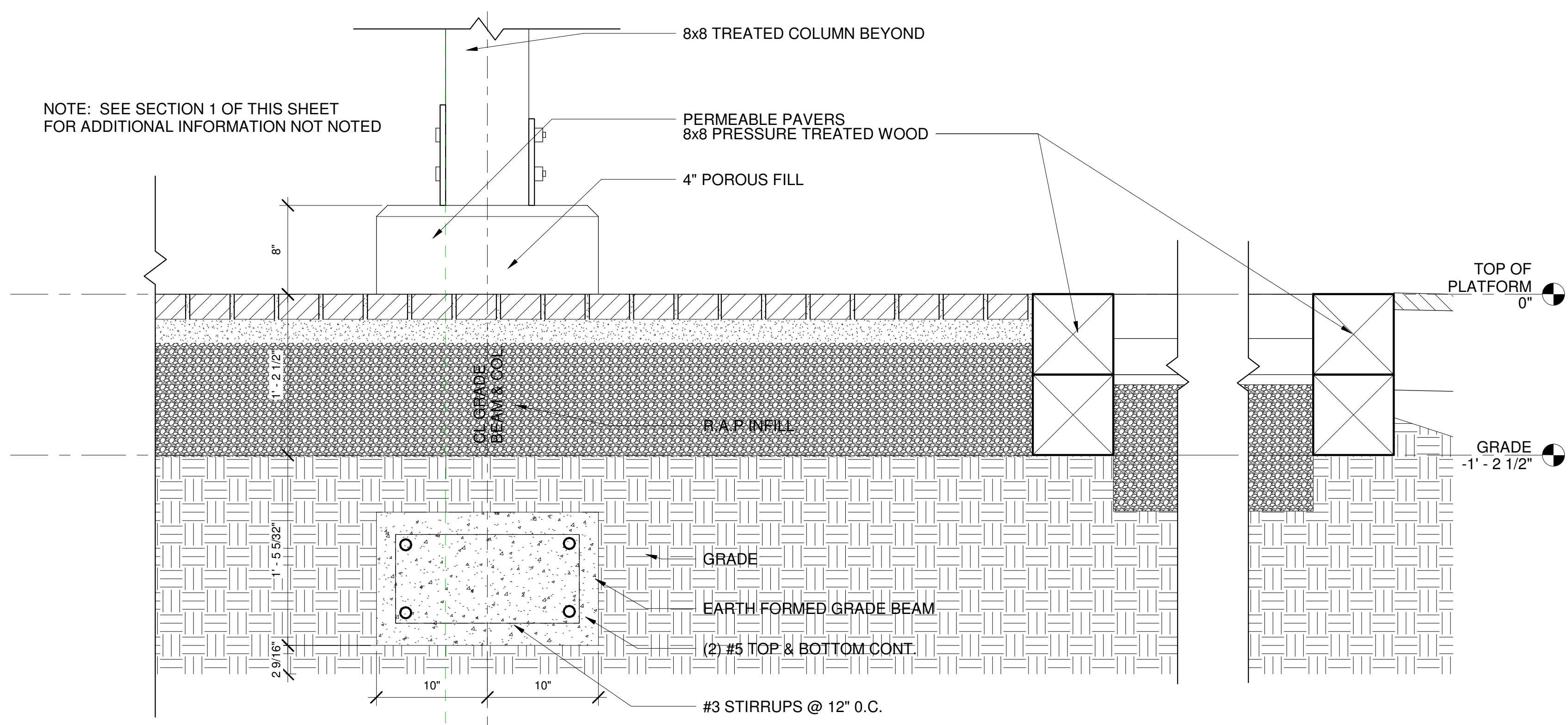
SEAL:

BBNWR OUTDOOR CLASSROOM
 DETAILS

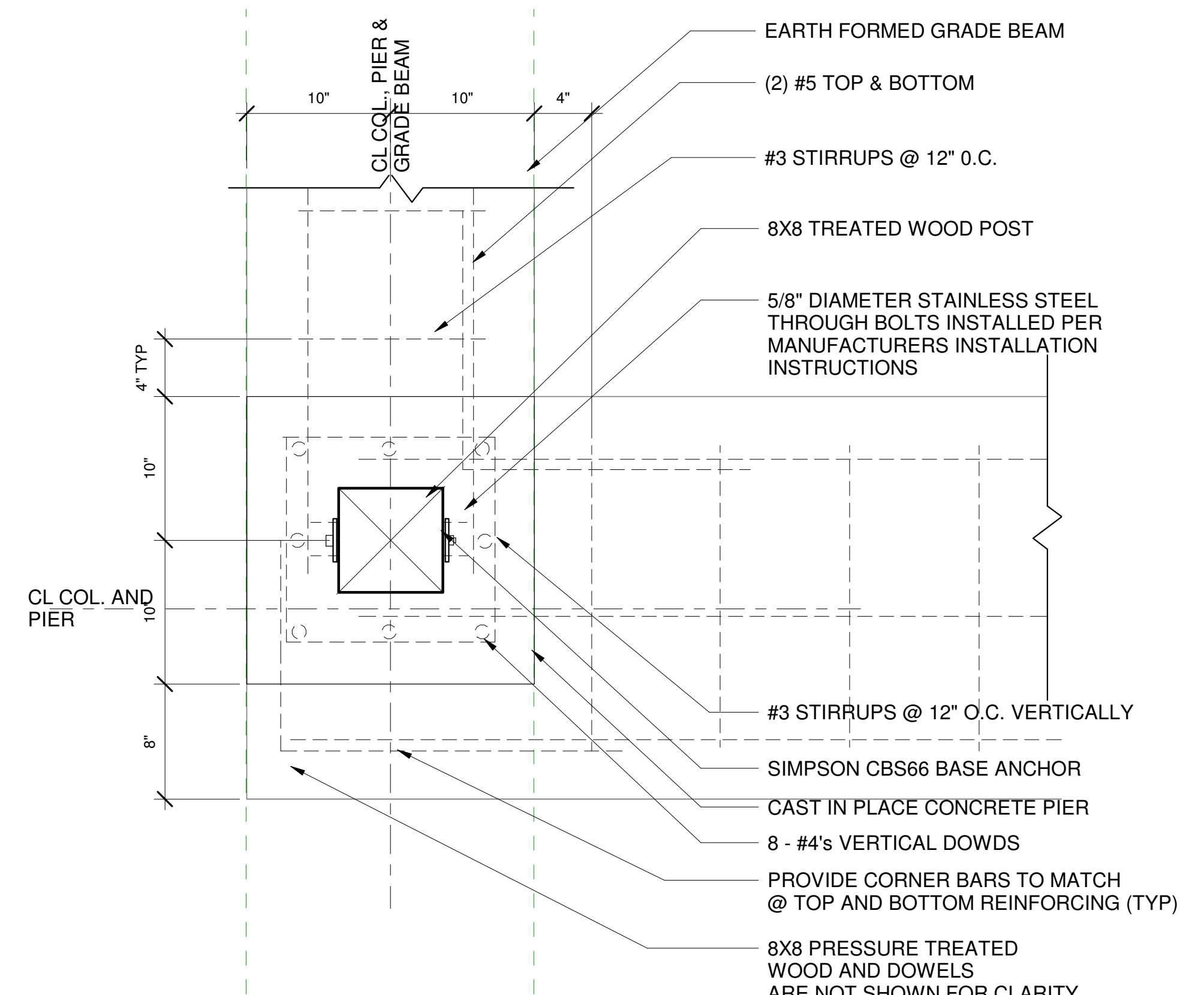
REVISIONS		
NO.	DATE:	DESCRIPTION:

DATE: 8/16/24

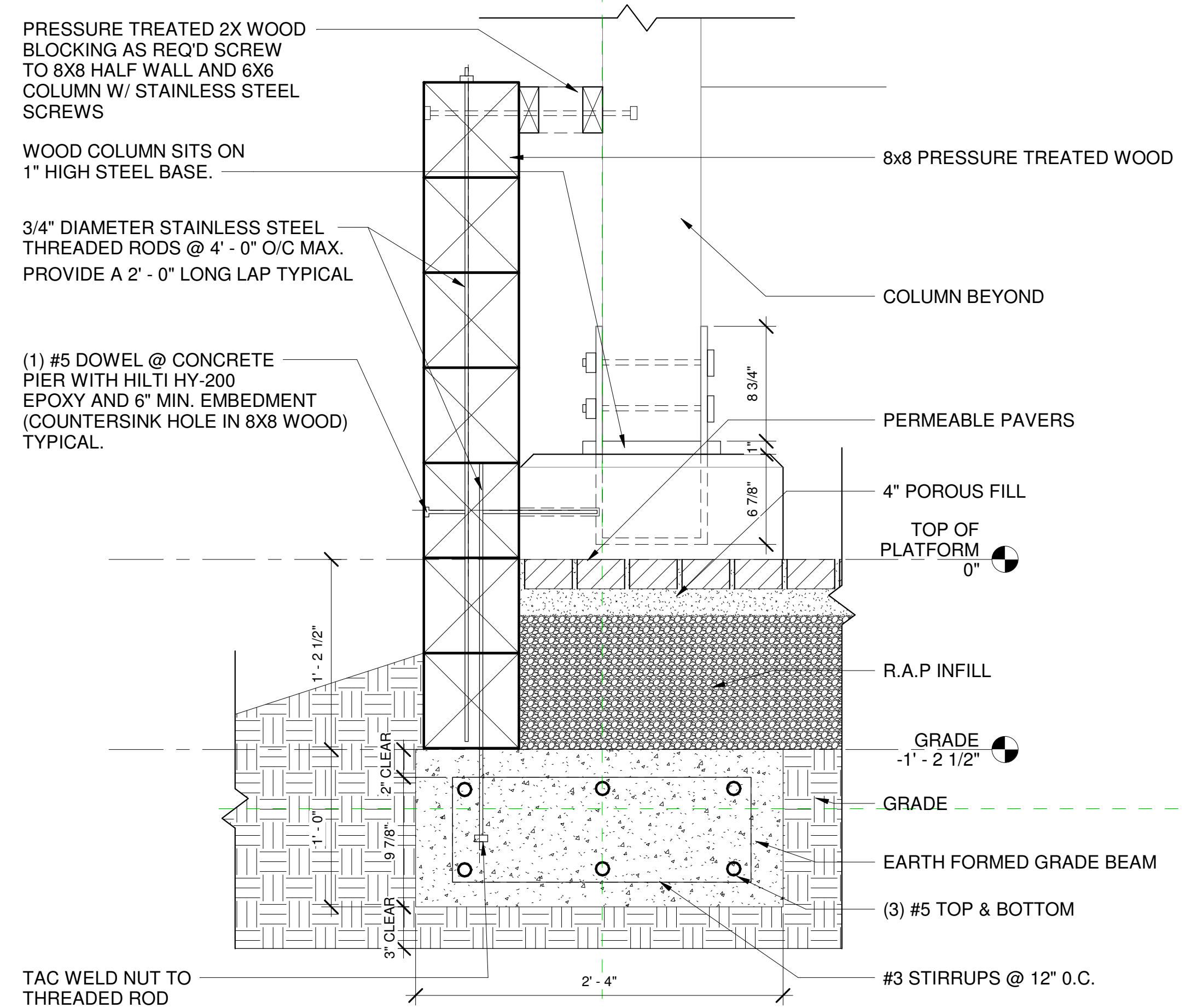
SHEET NUMBER:
A5.1



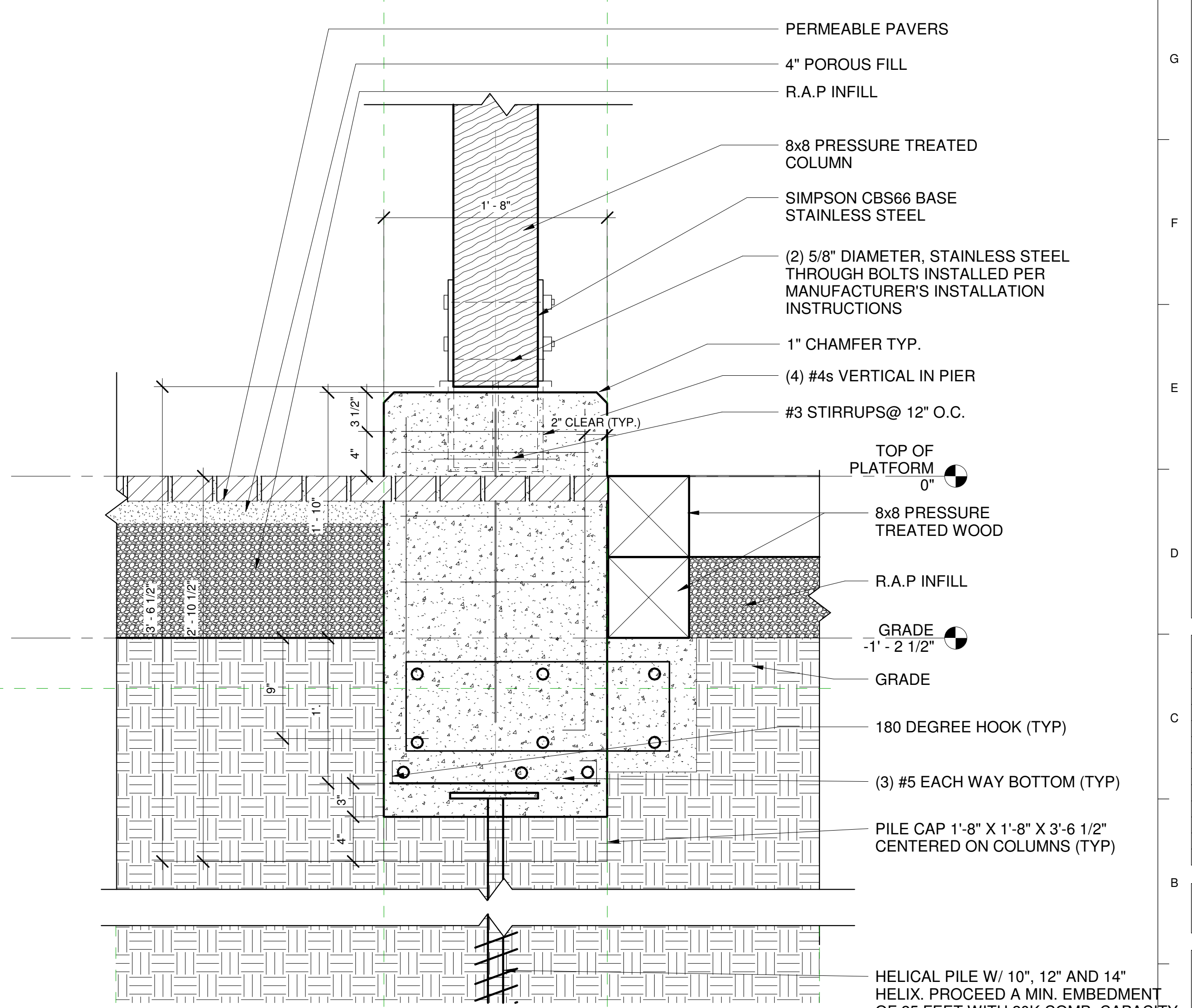
4 SECTION @ PLATFORM, GRADE BEAM & RAMP
 A5.1 1 1/2" = 1'-0"



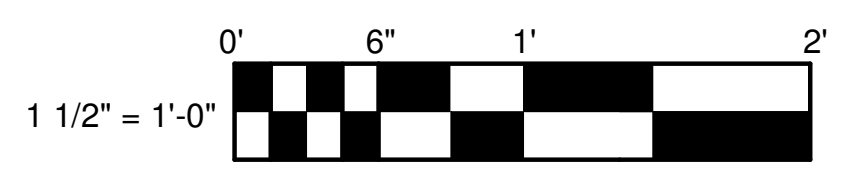
A5 COLUMN AND PIER PLAN VIEW
 A5.1 1 1/2" = 1'-0"



2 SECTION @ HALF-WALL & GRADE BEAM
 A5.1 1 1/2" = 1'-0"



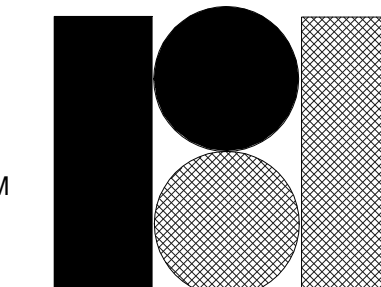
1 PIER TO COLUMN DETAIL-PILE AND FOOTER
 A5.1 1 1/2" = 1'-0"



HELICAL PILE W/ 10", 12" AND 14" HELIX. PROVIDE A MIN. EMBEDMENT OF 25 FEET WITH 20K COMP. CAPACITY AND LATERAL CAPACITY OF 2K (MINIMUM)

THESE DRAWINGS CAN NOT BE USED, COPIED, TRACED OR REPRODUCED, IN WHOLE OR PART OR MANNER WHATSOEVER WITHOUT PERMISSION FROM RBA ARCHITECTS

EVERY ATTEMPT HAS BEEN MADE IN THE PREPARATION OF THESE DRAWINGS TO AVOID MISTAKES. THE DESIGNER, OR ANYONE ELSE, SHALL BE RESPONSIBLE FOR ANY ERRORS OR OMISSIONS IN THESE DRAWINGS.



RBA ARCHITECTS

432 S. BATTLEFIELD BLVD., SUITE 101
 CHESAPEAKE VA, 23322
 PHONE 757-546-2471
 FAX 757-546-3812
 info@rbapc.com
 www.rbapc.com

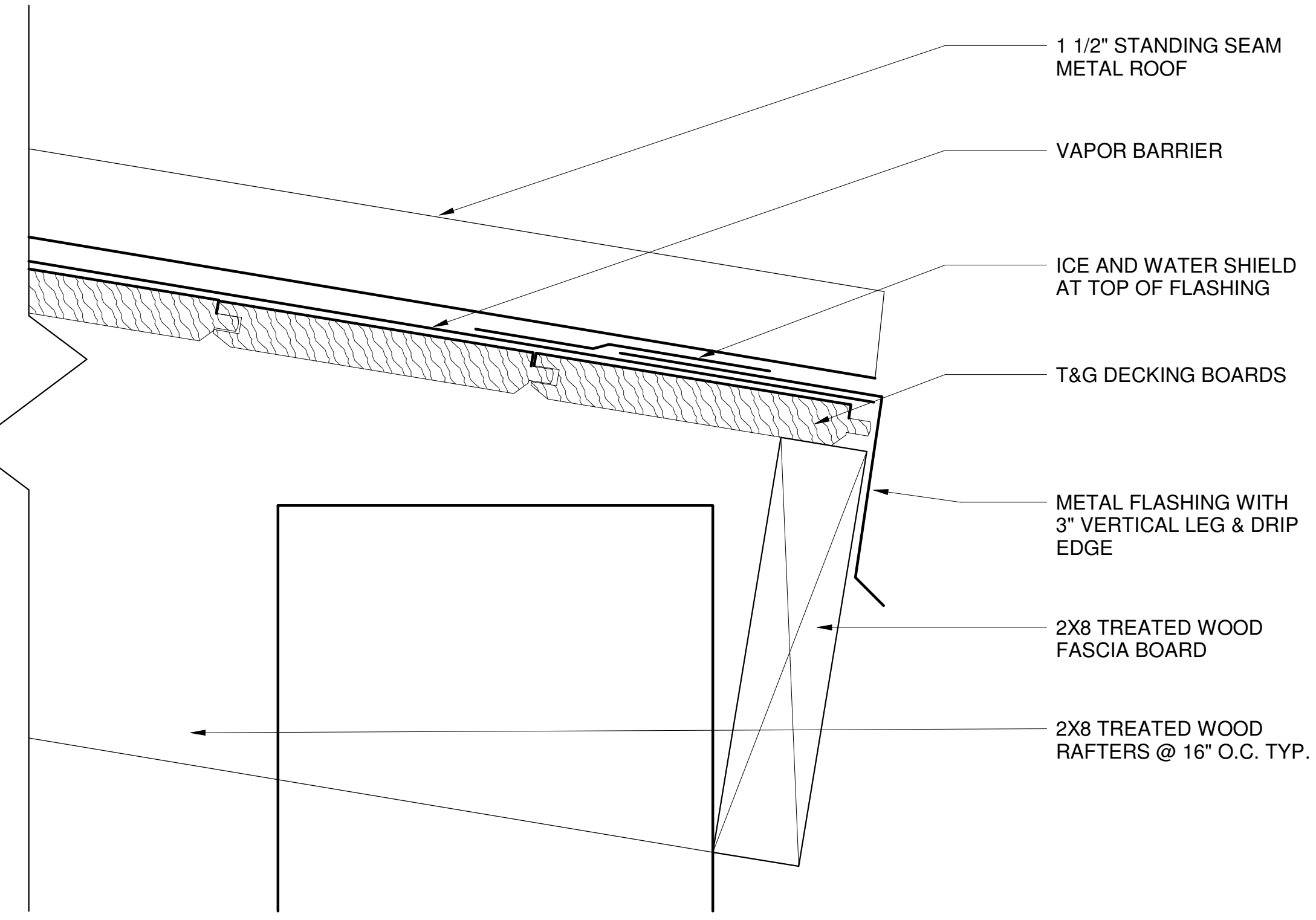
SEAL:

BBNWR OUTDOOR CLASSROOM
 DETAILS

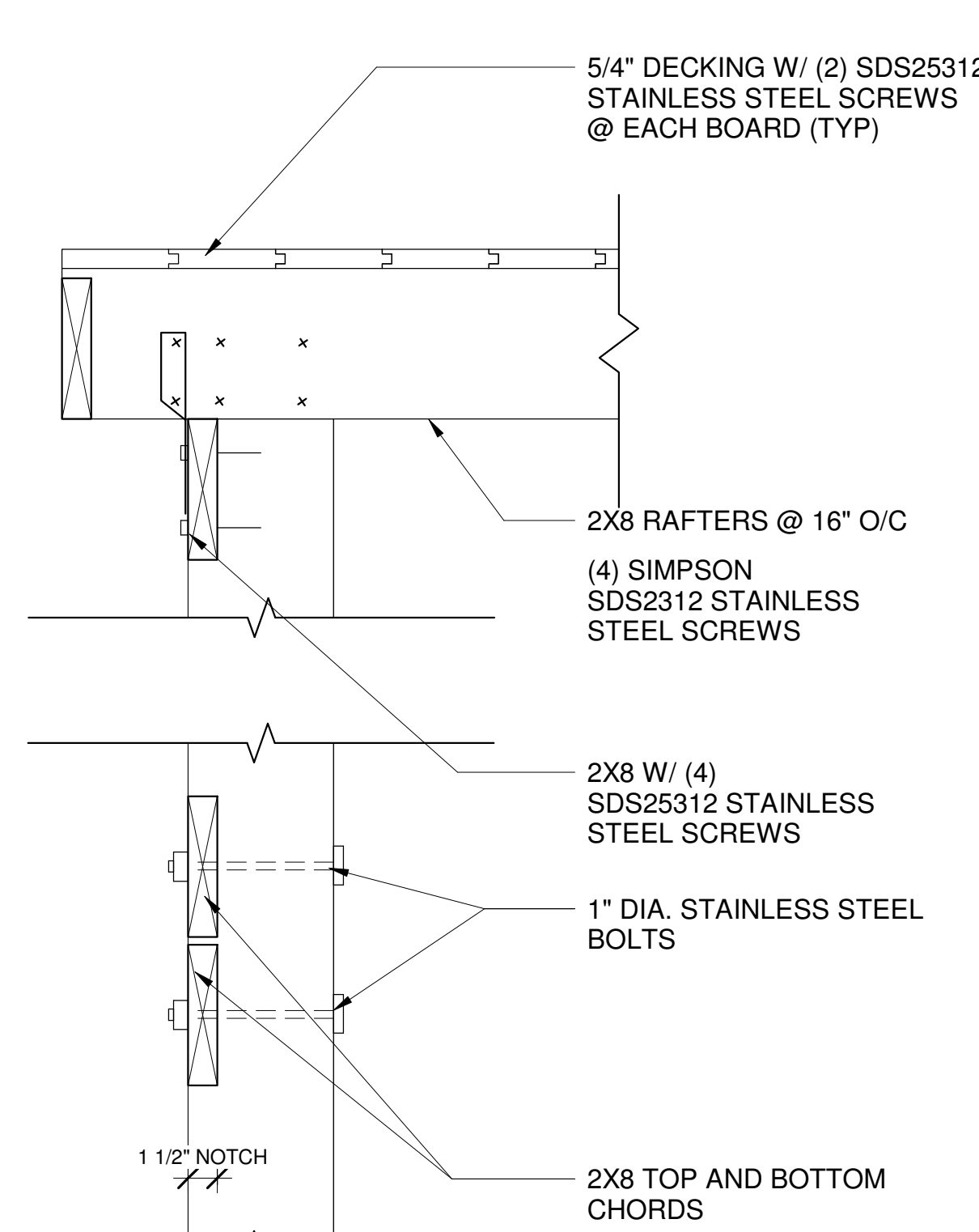
REVISIONS		
NO.	DATE:	DESCRIPTION:

DATE: 8/16/24

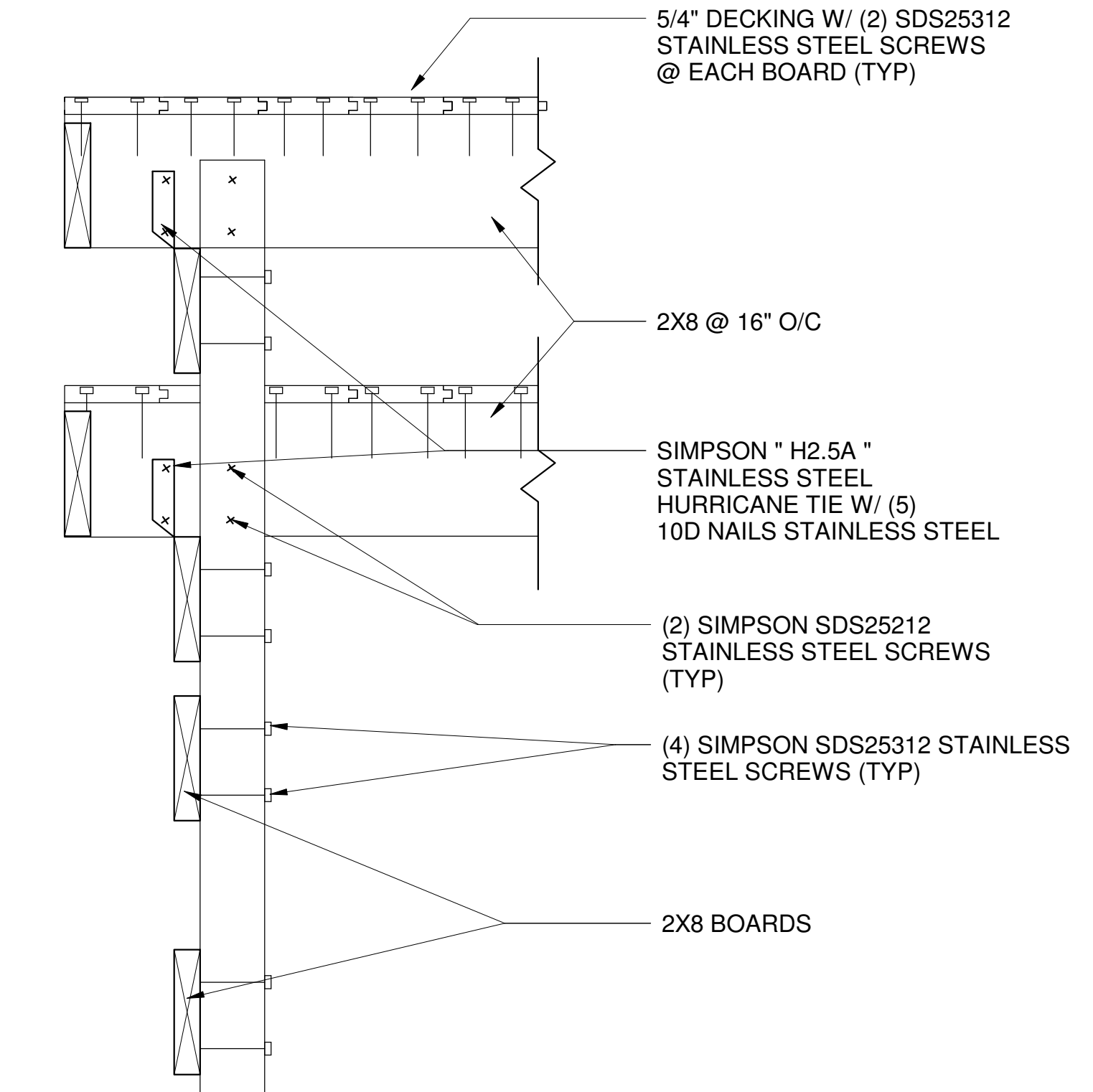
SHEET NUMBER:
A5.2



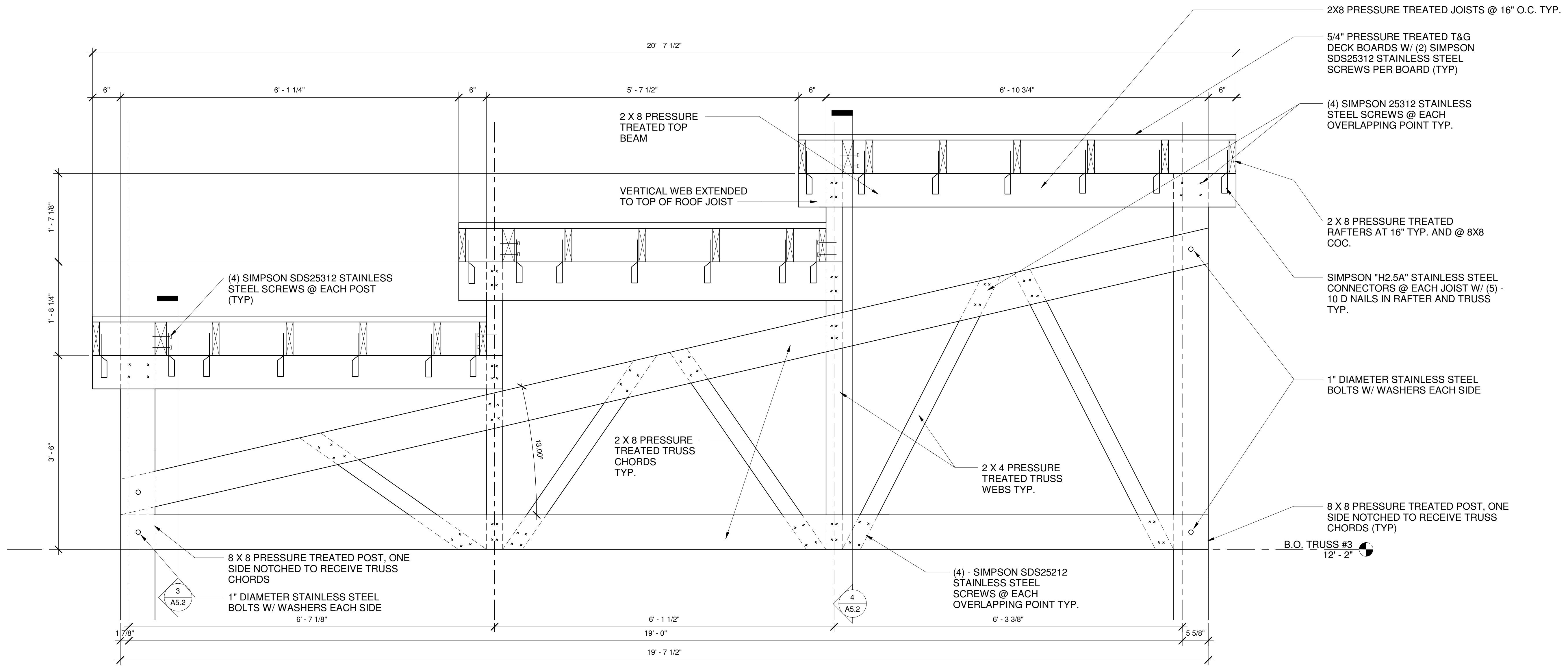
2 SECTION DETAIL @ LOW EAVE
 A5.2 1/2" = 1'-0"



3 Section 3
 A5.2 1 1/2" = 1'-0"



4 Section 4
 A5.2 1 1/2" = 1'-0"



1 TYPICAL TRUSS ELEVATION
 A5.2 1" = 1'-0"

NOTE: ALL STEEL TO BE STAINLESS STEEL