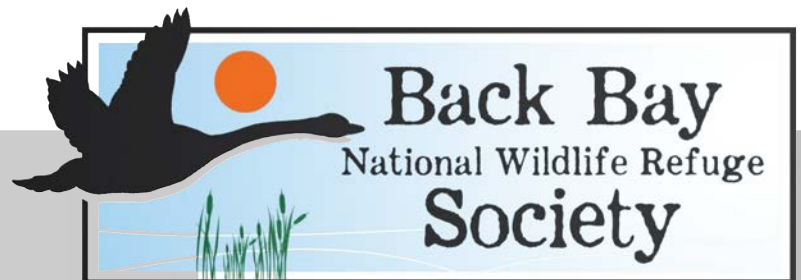




Partnership with **P**urpose

Our Vision:

A sustainable Back Bay National Wildlife Refuge that is responsive to a diverse native wildlife and habitat maintained in a healthy ecosystem as a contributing link in the migration chain of the Atlantic Flyway.



The National Wildlife Refuge System

"1871- Congress establishes the U.S. Commission on Fish and Fisheries, the first federal agency concerned with natural resource conservation. The commission is directed to study "the decrease of the food fishes of the seacoasts and lakes of the United States, and to suggest remedial measures."

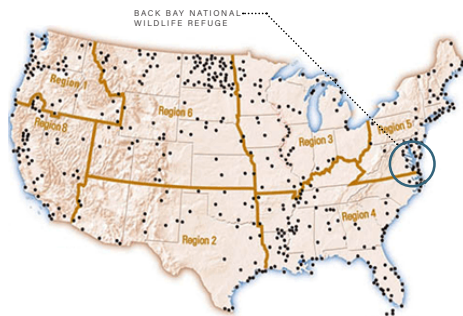
"On March 14, 1903, President Theodore Roosevelt established Pelican Island National Wildlife Refuge, along Florida's Atlantic coast, as the first unit of what would become the National Wildlife Refuge System."

"Today, the Refuge System provides and protects 150 million acres of land and water from the Caribbean to the Pacific, Maine to Alaska, plus more than 418 million acres of national marine monuments."

"1962-The Refuge Recreation Act is signed into law. It requires any public recreation activity on an individual refuge to be compatible with the refuge's purpose and that funds be available to manage the activity."

About flyways

"A flyway is a flight path used by large numbers of birds while migrating between their breeding grounds and their overwintering quarters. There are four major north-south flyways in North America and six covering Eurasia, Africa and Australasia."



NATIONAL WILDLIFE REFUGE MAP



AMERICAN FLYWAYS MAP

Back Bay NWR

Back Bay National Wildlife Refuge includes a thin strip of barrier island coastline typical of the Atlantic and Gulf coasts, as well as upland areas on the west bank of Back Bay.

Back Bay National Wildlife Refuge (BBNWR) was established on June 6, 1938 as a 4,589-acre refuge to provide feeding and resting habitat for migratory birds. It is a critical segment in the Atlantic Flyway.

Thousands of tundra swans, snow and Canada geese and a large variety of ducks visit the Refuge during the fall/winter migration. The Refuge manages ten freshwater impoundments, or water pools, specifically for bird life. The water levels of these pools are raised and lowered to provide the best possible habitat for the birds visiting the refuge throughout the year.

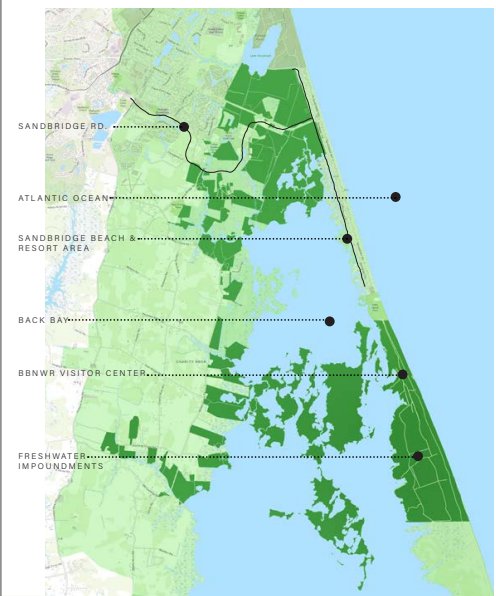
Back Bay NWR has 3 miles of National Recreation Trails open year-round to the public. The longest internal trails are closed from November through April, giving waterfowl plenty of space to feed and rest during their long migrations. Peak winter bird numbers are seen in December and January. Tram tours and the Wildlife Viewing Window provide visitors with an opportunity to view the birds during the closure period.

The Refuge also provides habitat for other wildlife, including threatened loggerhead sea turtles and recently recovered species like the brown pelican and bald eagle. Mammals such as coyotes, bobcats, river otters, white-tailed deer, red foxes, and dolphins can be seen at the Refuge.

Seven distinct habitats at the Refuge support numerous kinds of plant and wildlife, from snakes and frogs to live oak trees and essential dune grasses.



Thousands of tundra swans, snow and Canada geese and a large variety of ducks visit the refuge during the fall/winter migration



BBNWR AREA MAP



About The Society: Friends of Back Bay NWR

"Refuge Friends are dedicated community members who magnify the power of conservation efforts and help national wildlife refuges meet conservation goals that would otherwise be out of reach.

They do this by donating tens of thousands of volunteer hours and raising millions of dollars for local refuges. In the process, Friends help engage the American public in wildlife conservation, improve access to outdoor recreation and strengthen relationships between refuges and neighboring communities."

"The National Wildlife Refuge Volunteer Improvement Act of 2010 direct(s) U.S. Fish and Wildlife Service to carry out a National Volunteer Coordination Program within the National Wildlife Refuge System. More than 38,000 volunteers and Friends contribute about 1.3 million hours of support annually at national wildlife refuges."

The Back Bay National Wildlife Refuge Society is a 501(c)(3) nonprofit organization whose purpose is to promote and support Back Bay National Wildlife Refuge (BBNWR). We were established in 2019 and have grown to 146 members as of January, 2022.



Great Blue Heron



Sunset Point Overlook Viewing Platform

Board Members:

Daniel Ford, President
Former merchant mariner

Laura McMahon, Vice President
Teacher

Barry L Kurzer DDS, Treasurer
Retired general dentist

Catherine Miller, Secretary
Former life science teacher

Charlie Ellin
Board member Back Bay Restoration Foundation

Richard F. Dyer, III
Former broadcast engineer, City of Virginia Beach, former president/board member Back Bay Restoration Foundation

Reese Lukei, Jr.
Retired CPA, licensed bird banding/raptor specialist, research associate: Center for Conservation Biology; trails advocate

Chris Freeman
Teacher, environmental science VBPS

Chris Elam
Architect

Baylie Gagne
Non profit consultant

Barry Erdeljon
Professor emeritus, Marymount University

We celebrate diversity and the unique range of perspectives that inclusion brings to Back Bay National Wildlife Refuge Society.

PARTNERSHIP

We seek to form purposeful partnerships within our local business community where we:

- Recognize common values that align with our mission & goals
- Collaborate to achieve educational and environmental objectives
- Help bring projects to fruition through mutually beneficial long term relationships

Levels of Participation

1. Member Businesses
Three annual membership tiers: \$300, \$500 or \$1,000
2. Sponsor Businesses
Donation (money or materials) made in support of a specific event or project
3. Donor Businesses:
One time financial contribution in an amount of the donor's choosing

What We Can Offer

1. Publicity on our website, newsletters, social media, and annual report
2. On-site public event planning & coordination
3. Society Member attendance of events



Snowy Owl on southern dune of refuge

PURPOSE

Society Accomplishments

As a relatively new official "Friends" group of the FWS, and despite many Covid related challenges and restrictions over the course of the last two years, the following Society milestones were accomplished:

- Identification, creation, and installation of plant identification placards along the 0.4 mile Reese F. Lukei, Jr. Raptor Trail, that extends behind the Visitor Center to the Bay.
- Chronolog project: Installed four citizen-science photo stations for creation of time lapsed imagery
- Pollinator garden project: Installed a pollinator garden in the beds surrounding The Visitor Center
- Coordinated an Eagle Scout project which built and installed 12 standalone benches, as well as new integrated benches on the Kuralt, Sunset Point and Dune Trail overlooks. The standalone benches replaced old benches which were nearing or at the end of their life
- Osprey nesting platforms project: Reconstruction of one nesting platform in North Bay that had been destroyed by hurricane Dorian in September 2019, repair of two existing platforms in the southern part of the Bay, and the installation of two new platforms just west of and visible from the Refuge Visitor Contact Station. The program uses nesting "boxes" or platforms built and donated as part of an Eagle Scout project by Troop 442. Mounting poles and related materials were purchased by the Society.
- Refurbished the Visitor Center kiosk
- Published annual reports and biannual newsletters



Osprey nesting platform

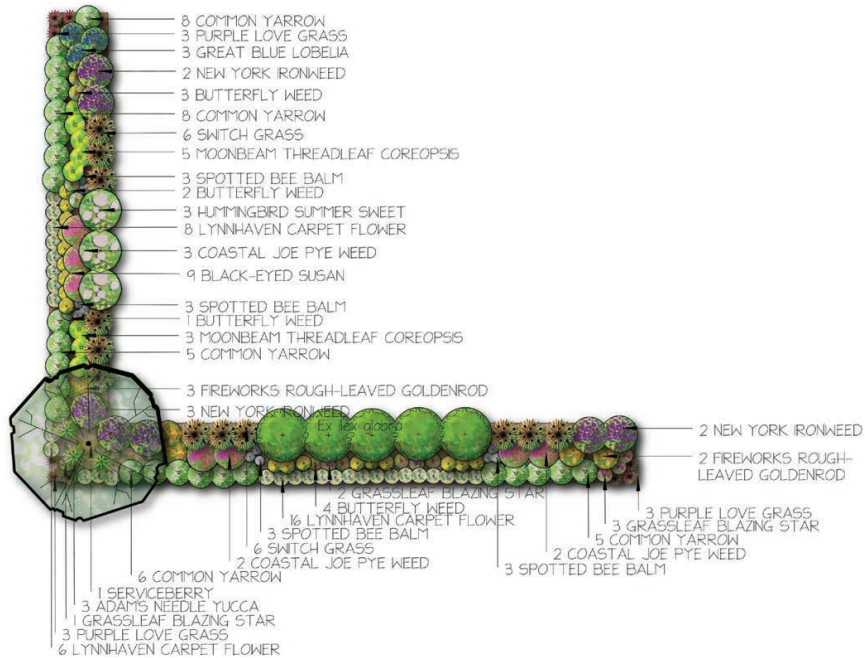


Identification placard

Featured Project: Pollinator Garden

The Pollinator Garden project was completed in the fall of 2021 along the north and west perimeters of the Refuge visitor center. Volunteers worked in multiple phases to remove and prune old vegetation, cultivate and amend soil, and fill beds with pollinator plants. The garden provides an aesthetic benefit to the Visitor Center while including beneficial native plants that support pollinators and other wildlife. Signage and visitor outreach are also planned to inform Refuge visitors of the benefits of the specific native plants clustered in the garden.

This project will require ongoing care and could be an opportunity for future contributions of time, materials or funding as well as a potential venue for educational programs.



Phase 1 volunteer work day



Renderings by Wild Works of Whimsy



Back Bay National Wildlife Refuge

Contact Information:

Physical Address:

4005 Sandpiper Rd, Virginia Beach, VA 23456

Mailing Address:

1324 Sandbridge Rd, Virginia Beach, VA 23456

Phone Number:

(757)301-7329

Website:

<https://www.fws.gov/refuge/back-bay>

Facebook:

www.facebook.com/backbaynwr**Back Bay National Wildlife Refuge Society**

Contact Information:

Mailing Address:

1324 Sandbridge Rd, Virginia Beach, VA 23456

Email Address:

backbaynwrsgociety@gmail.com

Website:

www.backbaynwrsgociety.org

Facebook:

<http://www.facebook.com/backbaynwrsgociety>Instagram: www.instagram.com/bbnwrsgocietyTwitter: www.twitter.com/bbnwrsgociety**Partnership with Purpose**[Back Bay NWR Society business partnerships](#)